

SIGMA L2

ITALY



“QUA, QUA, QUA”
CHAT ABOUT THE NEWS.



1/2019

LIGHTING AND INTERIOR DESIGN



COPYRIGHT © 2019
SIGMA L2 PAOLO GRANCHI SRL

All rights reserved.
Receive this email because you are registered in our lists.

MAGAZINE LIMITED EDITION



SIGMA L2

ITALY

“QUA,QUA,QUA...”

CHAT ABOUT THE NEWS, ABOUT US.

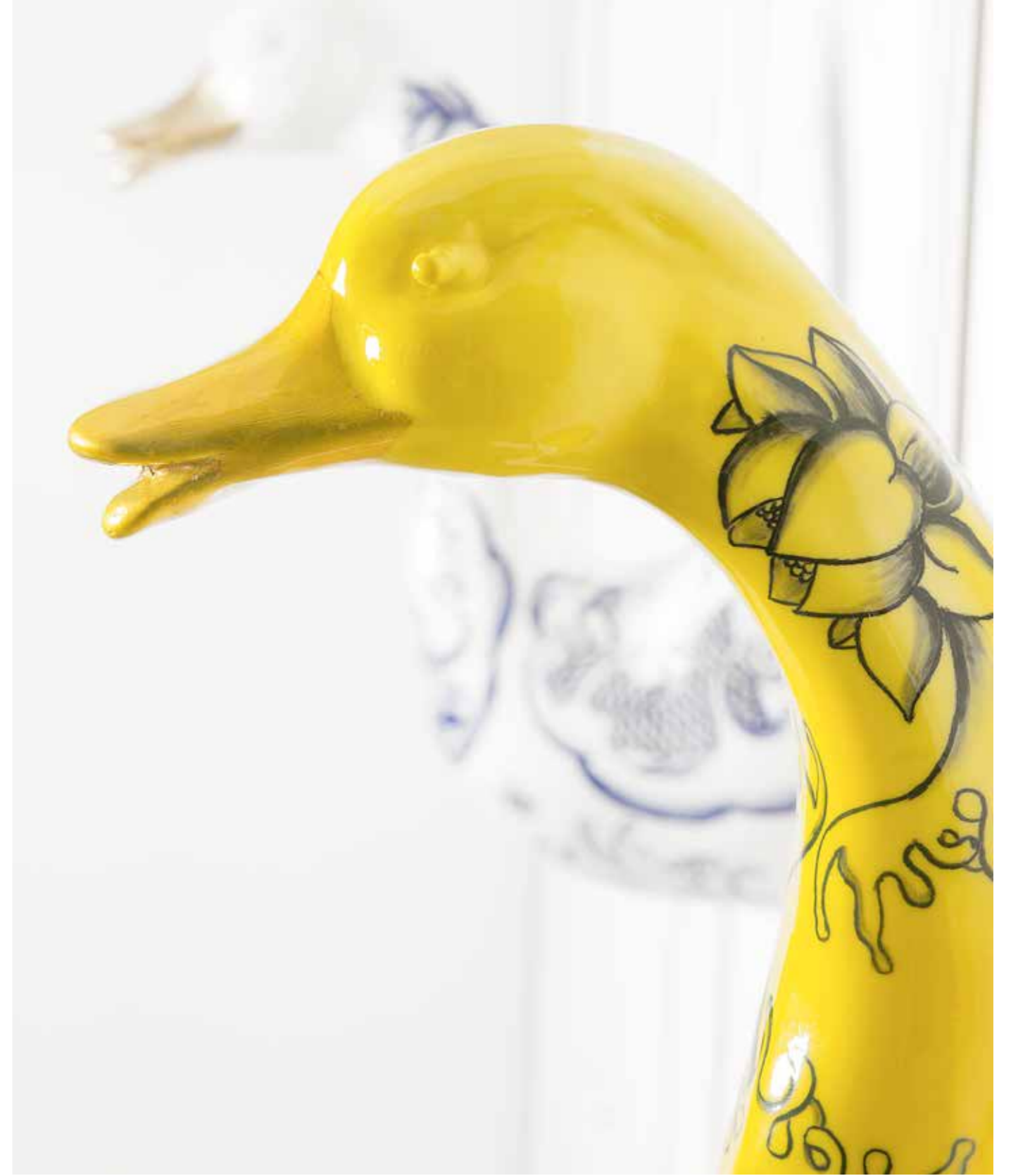
1ST ISSUE

Looking for a new concept of graphic communication is born instead of brochures or leaflets, a MAGAZINE. A magazine where we will talk about our products, our company but also about our Family, the Granchi Family, we will try to describe what will inspire us, feel. In this first edition you will find what we have created for the SALONE DEL MOBILE.MILANO

This year we focused on accessories giving birth to a line of lovely Duck and Swan interpreted in many ways. We also expanded our scratched natural brass line by presenting sconces and chandeliers and restyling our ICON line the CL1830 our RINGS and other table lamps inspired by our moment.

For those who visited our booth at the Show, they could see our tribute to the classic. For a special project, we made two pairs of 200cm tall vases. A custom job that for us turned out to be an important professional and artistic growth done in 6 months of work. With the approval of the our client, we exhibited the two vases at the Salone del Mobile and in the wake of this work, two new classic vases were born.







A348

Design Granchi Studio
cm 22x46h
Papera in maiolica con becco oro e decorazione tattoo in nero sotto il giallo.
Majolica goose with gold beak and decoration tattoo in black over the yellow.





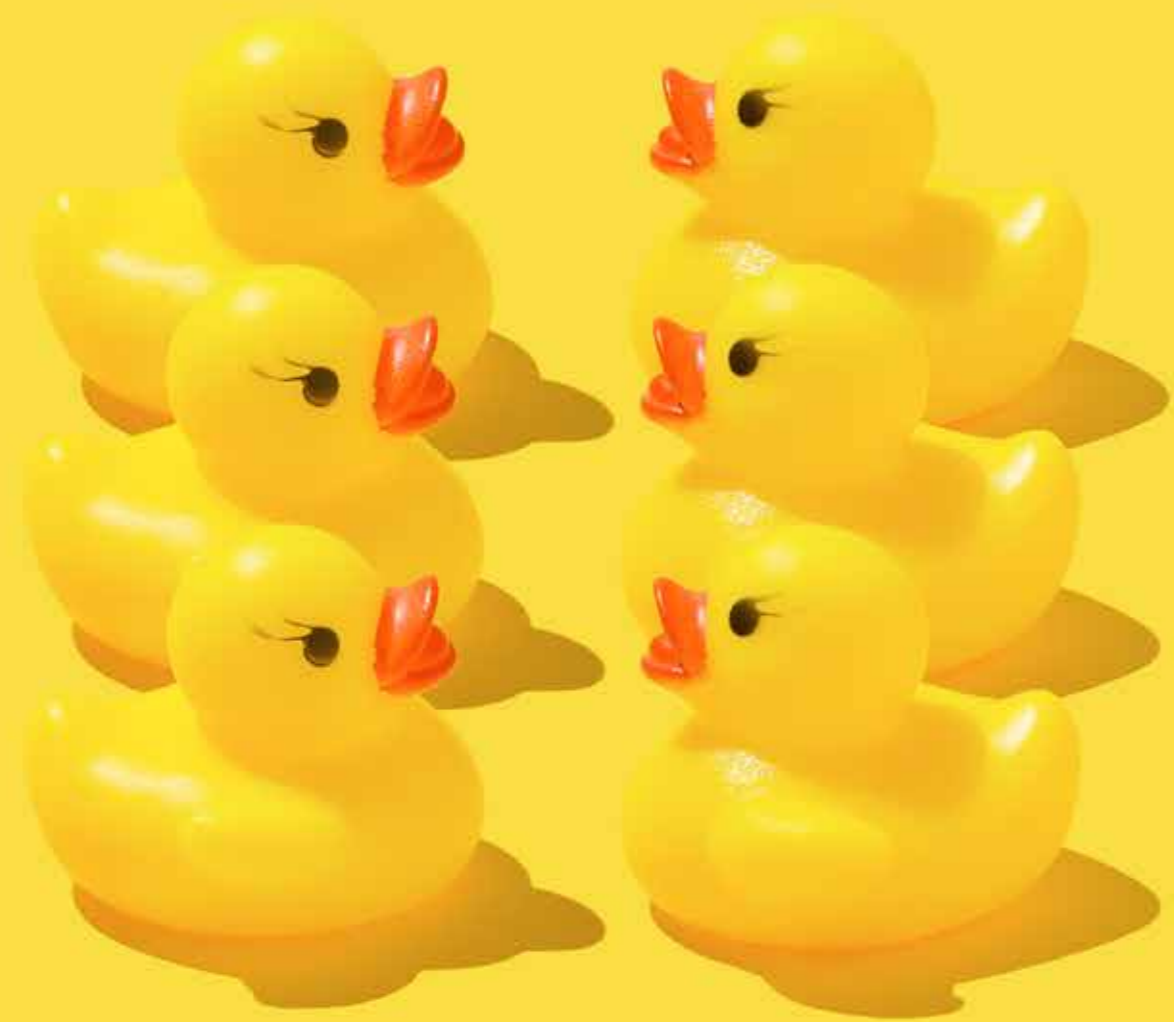
A347

Design Granchi Studio
cm 22x46h
Papera in maiolica con becco oro e decorazione tattoo in blue.
Maiolica goose with gold beak and decoration tattoo in blue.

A347/R

Design Granchi Studio
cm 22x46h
Papera in maiolica con becco oro e decorazione tattoo in rosso.
Maiolica goose with gold beak and decoration tattoo in red.





A344/O

Design Simone Granchi
cm 22x46h
Patera in maiolica con becco oro.
Maiolica goose with gold beak.

A343/O

Design Simone Granchi
cm 22x60h
Cigno in maiolica con bocca oro.
Maiolica swan with gold beak.



CL2111
Design Francesca Granchi | cm ø47x86h | 1xE27 60W | Lampada in maiolica smaltata a mano con particolari in ottone nikelato. Paralume nero interno oro e avorio.
Lamp in hand-glazed maiolica with details in nickel-plated brass. Lampshade in black inside gold and ivory.





A344/O
Design Simone Granchi
cm 22x46h
PAPERINA in maiolica con becco oro
Maiolica goose with gold beak



A344
Design Simone Granchi
cm 22x46h
PAPERINA in maiolica con becco arancio
Maiolica goose with orange beak









A345
Design Simone Granchi
cm 22x46h
Pappera in maiolica con chicco in bocca.
Majolica goose with grain in the mouth.

CO/ORO
Design Granchi Studio
Corona oro.
Gold crown.

CO/O/V
Design Granchi studio
Occhiali in oro con lente verde.
Gold sun glasses with green lens.



A346
Design Simone Granchi
cm 22x46h
Pappera in maiolica tutta bianca.
Majolica goose completely in white.

OC/O/V
Design Granchi studio
Occhiali in oro con lente verde.
Gold sun glasses with green lens.



A345
Design Simone Granchi
cm 22x46h
Paperain maiolica con chicco in bocca.
Majolica goose with grain in the mouth.

CO/AR
Design Granchi Studio
Corona argento.
Silver crown.

OC/AR/G
Design Granchi studio
Occhiali in nickel con lente gialla.
Nickel sun glasses with yellow lens.

A346
Design Simone Granchi
cm 22x46h
Paperain maiolica tutta bianca.
Majolica goose completely in white.

OC/AR/G
Design Granchi studio
Occhiali in nickel con lente gialla.
Nickel sun glasses with yellow lens.







A345

Design Simone Granchi
cm 22x46h
Papera in maiolica con chicco in bocca.
Majolica goose with grain in the mouth.

CO/SX/AR

Design Granchi Studio
Corona argento spostata a sinistra sulla testa.
Silver crown shifted to the left on the head.



A345

Design Simone Granchi
cm 22x46h
Papera in maiolica con chicco in bocca.
Majolica goose with grain in the mouth.

CO/DX/AR

Design Granchi Studio
Corona argento spostata a destra sulla testa.
Silver crown shifted to the right on the head.

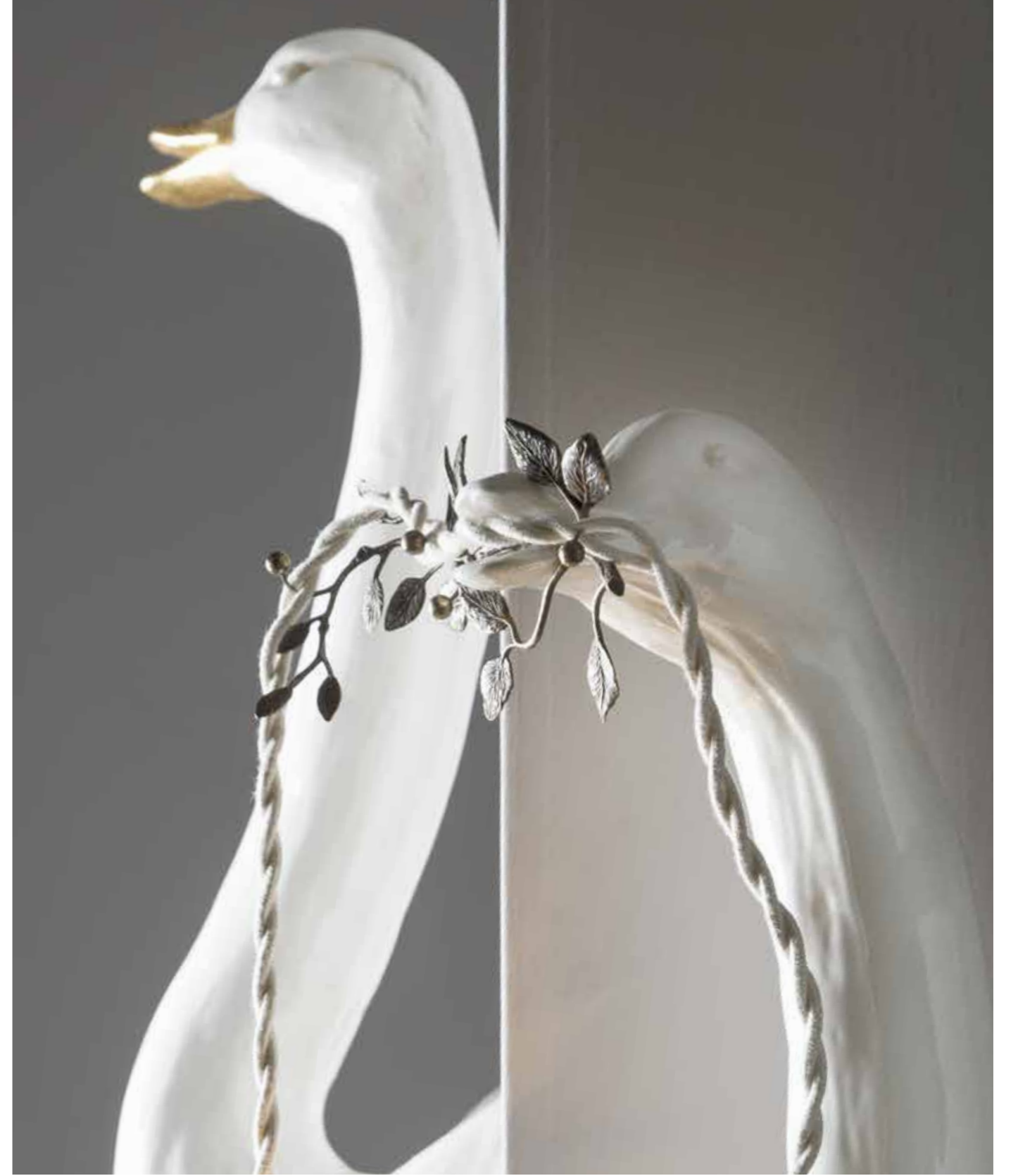


A345

Design Simone Granchi
cm 22x46h
Papera in maiolica con chicco in bocca.
Majolica goose with grain in the mouth.

CO/ORO

Design Granchi Studio
Corona montata centrale sulla testa.
Gold crown on the central part of the head.





Z633/1
Design Granchi Studio
cm 22x46h | 1XE14 40W
Cigno in maiolica con particolare in bocca in fusione di bronzo con paralume avorio interno oro.
Maiolica swan with cast bronze details in the mouth.
The lampshade is in ivory silk inside gold.

Z633
Design Granchi Studio
cm 22x46h | 1XE14 40W
Cigno in maiolica con particolare in bocca in fusione di bronzo con paralume a quadretti e interno oro.
Maiolica swan with cast bronze details in the mouth.
The lampshade is in small squares and inside gold.







Z632
Design Granchi Studio | cm. ø43x107h | 2xE14 40W | Applique in ottone naturale inciso a mano in effetto seta. I paralumi sono in metallo.
Wall lamp all engraved by hand in "Fabric Effect". Natural brass. Lampshade in metal.



7295/5
Design Granchi Studio | cm. ø78x190h | 5xE14 40W | Lampadario in ottone naturale inciso a mano in effetto seta. I paralumi sono in metallo.
Chandelier all engraved by hand in "Fabric Effect". Natural brass. Lampshade in metal.





IF WE
THERE'D BE NO RE

2592

Design Simone Granchi
cm 48x57h
Vaso in maiolica tutto inciso a mano con base in marmo nero marquina.
Maiolica vase all hand-engraved with black marquina marble base.





Design Simone Granchi | cm ø47x38x48h | 1xE27 60W | Vaso in maiolica tutto inciso a mano con base in marmo nero marquina e particolare in ottone.
Majolica vase all hand-engraved with black marquina marble base and brass detail.

2593



SIGMA L2

ITALY

CL1830/FL

CL1830 Fluo

Since last year we have been inspired by the reinterpretation of our Historical Archive which last year gave us a vast collection of lights. This year we have proposed one of our ICON collection our Rings born in 2005, source of inspiration for many, this year has been revived in phosphorescent lacquer: orange, pink, blue, yellow and green, all combined with our favorite fabric: the velvet.





CL1830/FL

Design Simone Granchi 2005 - Rings Collection
cm ø25x102h12xÆ27.60W
Lampada in ferro smerigliato in colore fluorescente. Paralume in velluto turchese.
Brushed iron lamp in fluo color. Velvet turquoise shade.



Design Simone Granchi | cm ø45x81h | 1xE27 60W | Lampada in maiolica smaltata a mano con base in legno laccato. Paralume in garza oro.
Lamp in hand-glazed majolica with base in lacquered wood. Gold gauze lampshade.

CL2112





SIGMA L2

SIGMA L2 Paolo Granchi srl
Via Degli Olmi, 145
50019 Sesto Fiorentino | FI - ITALY
Tel +39 055 4207107
fax +39 055 4207158
info@sigma2.it | www.sigma2.it





1/2019

LIGHTING AND INTERIOR DESIGN



COPYRIGHT © 2019
SIGMA L2 PAOLO GRANCHI SRL

All rights reserved.
Receive this email because you are registered in our lists.

MAGAZINE LIMITED EDITION